

Music.

COME BACK TO THE FARM.

SONG AND CHORUS.

WORDS AND MUSIC BY HENRY C. WORK.



1. Bro-ther, come back! come back! Dear bro-ther, what can be the charm, That holds you so strong—That
 2. Fa - ther, tho' years a - go The a - blest and strong-est of men, Is fail-ing at last—You
 3. Come from the wide, wide world, Where dan-gers and per-ils a - bound! Oh how can you roam So



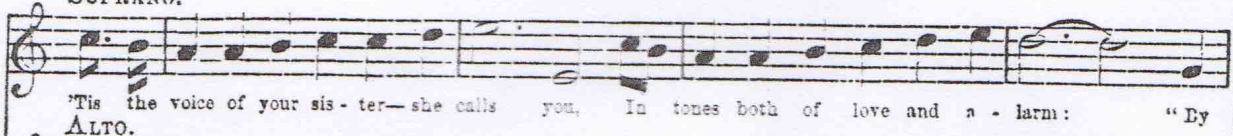
keeps you so long A - way from your fa-ther's old farm? Poor fa - ther, he tells how he needs you—And
 know he has pass'd The mile-stone of three-score and ten. He's fee - ble, he's trem-bling, he's lone - ly, Who
 far from your home, Where safe-ty and com - fort are found? Come, bring us the light of your presence, Come,



would it be more than is due, His la - bors to share, His bur-dens to bear, Who once bore your burdens for you?
 once was so fear - less and brave; Yet you are a - way, While day after day He tot-ters on down to the grave.
 give us the strength of your arm; That we may once more See joy as of yore, Sit smil-ing up - on the old farm.

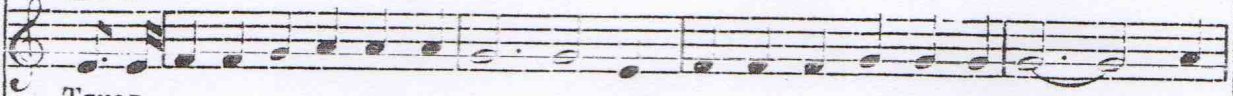
CHORUS.

SOPRANO.



'Tis the voice of your sis - ter—she calls you, In tones both of love and a - larm: "By

ALTO.



TENOR.

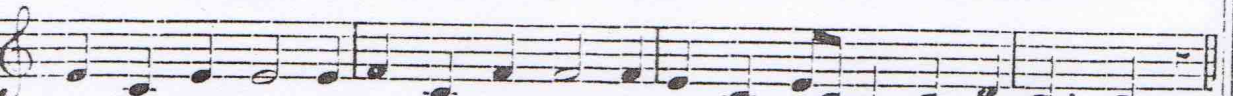


'Tis the voice of your sis - ter—she calls you, In tones both of love and a - larm "By

BASS.



dead mo - ther's pray'rs—By fa - ther's gray hairs—Dear broth - er, come back to the farm."



dead mo - ther's pray'rs—By fa - ther's gray hairs—Dear broth - er, come back to the farm."



By permission of Root & Cady, Chicago, owners of the Copyright, who publish it with Piano accompaniment.

W. W. CLARK, Music Dealer, Guelph, will send it prepaid to any address, on receipt of 25 cents.